

SILICONE RENDER SHADES

White ●▲▲ Cushion White ▲▲▲ Stunning White ▲▲▲

Soft Primrose ▲▲▲ Delicate Mocha ▲▲▲ Soft Barley ▲▲▲

Soft Pink ▲▲▲ Delicate Apricot ▲▲▲ Alabaster 04 B 15 ▲▲▲

County Haze ▲▲▲ Whisp ▲▲▲ Delicate Plum ▲▲▲

Tori ▲▲▲ Ash Grey 22 B 15 ▲▲▲ Snowdon ▲▲▲

Florence ▲▲▲ Eros ▲▲▲ Boy Blue ▲▲▲

Sea Mist ▲▲▲ Skylight 18 C 31 ▲▲▲ Dawn Mist 12 B 15 ▲▲▲

Chalky ▲▲▲ Connie ▲▲▲ Latitude ▲▲▲

Parchment 10 C 31 ▲▲▲ Soft Apricot ▲▲▲ County Cream 08 C 31 ●▲▲

Strawberry Dawn ▲▲▲ Pastel Rose ▲▲▲ Rosebud ▲▲▲

Renaissance Pink ▲▲▲ Zephyr 04 B 17 ▲▲▲ Daphne ▲▲▲

Amador ▲▲▲ Mirage ▲▲▲ Calam ▲▲▲

Iceberg ▲▲▲ Powder Blue ▲▲▲ Blue Mink 18 B 17 ▲▲▲

Willow Green 14 C 31 ▲▲▲ Spring Fern ▲▲▲ Chilterns ▲▲▲

Magnolia 08 B 15 ▲▲▲ Ivory 10 B 15 ●▲▲ Pale Ivory ▲▲▲

Honeysuckle ▲▲▲ Helium ▲▲▲ Soft Gazelle ▲▲▲

Dusky Apricot ▲▲▲ Soft Rose ▲▲▲ Bisque ▲▲▲

Hyacinth ▲▲▲ Dewberry ▲▲▲ Wild Lilac 24 C 33 ▲▲▲

Silver 00 A 01 ▲▲▲ Morning Mist 10 A 03 ▲▲▲ Shine ▲▲▲

Ice Blue 18 E 49 ▲▲▲ Porcelain 20 C 33 ▲▲▲ Symphony ▲▲▲

Victorian Mint ▲▲▲ Pastel Green ▲▲▲ Ming Blue 16 C 33 ▲▲▲

Cotton Cream ▲▲▲ Blonde ▲▲▲ Spring Daffodil ▲▲▲

Earl Grey ▲▲▲ Egypt ▲▲▲ Hay Valley ▲▲▲

Champagne ▲▲▲ Couscous ▲▲▲ Pale Pecan ▲▲▲

Light Mauve ▲▲▲ Petal ▲▲▲ Sweet Grape ▲▲▲

Mandal ▲▲▲ Orleans Violet ▲▲▲ Lavender 22 B 17 ▲▲▲

St. Lucia ▲▲▲ Snowdrift ▲▲▲ Fountain ▲▲▲

Laurel ▲▲▲ Pixie ▲▲▲ Tamarisk ▲▲▲

Banana Split ▲▲▲ Subtle Lemon 10 E 49 ▲▲▲ Marzipan ▲▲▲

Vanilla 10 C 33 ▲▲▲ Dusky Haze ▲▲▲ Orkney ▲▲▲

Russo 06 C 33 ▲▲▲ Powder Pink 02 C 33 ▲▲▲ Caprice 04 C 33 ▲▲▲

Cordiale ▲▲▲ Columbine ▲▲▲ Heather Blush ▲▲▲

Misty Grey ▲▲▲ Cumulus ▲▲▲ Princess Grey 00 A 05 ●▲▲

Lunar Blue ▲▲▲ Moody Blue ▲▲▲ Gossamer ▲▲▲

Apple 12 C 33 ▲▲▲ Spearmint ▲▲▲ Venetian Green 14 E 51 ▲▲▲

Soft Glow ▲▲▲ Jasmine Yellow 10 E 50 ▲▲▲ Crumble ▲▲▲

Chime ▲▲▲ Nu Stone ▲▲▲ Fudge ▲▲▲

Toadstool 04 B 21 ▲▲▲ Heather ▲▲▲ Paisley ▲▲▲

Coral Mist ▲▲▲ Denham ▲▲▲ Whisper Grey ▲▲▲

Danube ▲▲▲ Oasis ▲▲▲ Summer Blue 18 E 50 ▲▲▲

Mint ▲▲▲ Jasper ▲▲▲ Gentle Lime ▲▲▲

Castaway ▲▲▲ Spanish Sun ▲▲▲ Oxlip ▲▲▲

Mushroom 08 B 17 ●▲▲ Ellastone ▲▲▲ Chamois ▲▲▲

Sandstone 08 C 35 ▲▲▲ Peach Blush ▲▲▲ Cocktail ▲▲▲

Viola ▲▲▲ Pink Bombshell ▲▲▲ Fizzy Pink ▲▲▲

Steel Grey 10 A 07 ▲▲▲ Shadow 18 B 21 ▲▲▲ Wedgewood ▲▲▲

Horizon 18 C 35 ▲▲▲ Harbour ▲▲▲ Bouquet ▲▲▲

Mistletoe 10 B 17 ▲▲▲ Silver Ash 12 B 17 ▲▲▲ Kalamata ▲▲▲

Johnstone's TRADE STORMSHIELD

RENDER COLOUR CARD

At Johnstone's Trade we are committed to progressing product performance. We specialise in high performance renders, trade paints, woodcare products and performance coatings. We pride ourselves in going above and beyond to ensure we exceed your expectations.

This Johnstone's render colour guide has been compiled for the professional applicator and offers a collection of over 200 classic shades to help you easily select the perfect colour for your project. If you cannot find the exact colour you are looking for Johnstone's has an advanced tinting system which can offer a variety of additional colours.

Key

- ▲ Colours available in Full Silicone Render
- ▲▲ Colours available in Mineral Thin Coat Enhanced Render
- ▲▲▲ Colours available in Mineral Thin Coat Render & Silicone Mineral Thin Coat Render
- At risk of fading in strong sunlight

SCRATCH RENDER SHADES

Natural White High White Ivory Cream Gold Earth Golden Brown Pastel Rose Sandstone Terracotta Green Blue Grey Gun Metal

BRICK EFFECT RENDERS

Brick Red Charcoal Golden Stone Light Grey Classic Mortar Classic Red Sandstone Terracotta Dark Brown Dark Grey Traditional Grey Traditional Red

POINTING MORTARS

Natural Dark Grey Black/Charcoal York Stone White Dark Brown Classic Mortar

DASH RECEIVERS

Antique White Blue Pink Sandstone Buttermilk Cream Soft cream Stone Grey Stone Terracotta Natural White Pale Stone

DASH AGGREGATES

Ashton Cream Barleycorn Quartz Beige Marble Heritage Spar Honey Iris Seville Snowdrop Staffordshire Pink Brightstone Buff Quartz Cameo Monarch Nordic Oatmeal Sunset Calcinced Flint Black Chatsworth Spar Classic Spar Derbyshire Spar Polar Black & White Polar White Polar Red & White Fran Spar Haddon Spar Harvest Red Granite Rosa Champagne Round Gravel

Colour Accuracy

Every effort has been made to accurately reproduce colour swatches but for technical reasons associated with colour reproduction and render manufacture variations may occur. Please always ensure that a sample panel of the product and colour chosen is applied and approved before commencing any works.

Health & Safety

Health and Safety data sheets for all Johnstone's Trade Stormshield products are available on request. Always read the Health and Safety data sheet for all products prior to use.



STORMSHIELD

EWI & RENDER



EXPERTS IN EXTERIOR COLOURS

The impact of colour on the way we act and feel cannot be underestimated and at Johnstone's Trade we understand the huge influence it holds. As a company with a long pedigree in coatings, we truly understand both the technical performance and psychological impact of colour.

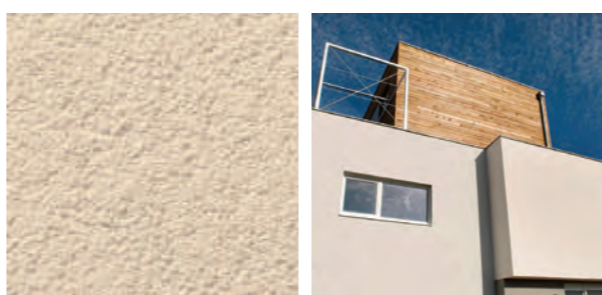
BESPOKE COLOURS

Speak to our colour experts for other shades that are not part of the standard render offer. We can produce unusual or special colours from across the colour spectrum to client request. Please note that additional lead times may be required for special colours.

For more information contact your Technical Sales Manager or call us on 01924 354354.

SUPERB COLOUR ADVISORY

Whether you require bespoke colour schemes, colour samples or general colour advice, Johnstone's Trade can provide the ideas and answers you need. Choosing from an array of colours may prove daunting, so we have experienced colour consultants available to assist you throughout the colour selection process.



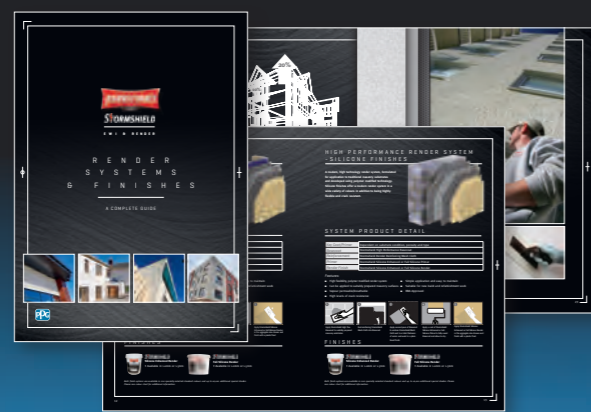
COLOUR SAMPLING SERVICE

Should you need to see the actual renders in the colour chosen before making your final decision we are able to provide a fast, reliable colour sample for you, or alternatively we can arrange for one of our team to apply a panel to a building or area you specify.



EXTERNAL WALL INSULATION

If you are choosing a render colour as a finish for an External Wall Insulation System you may want to review the Johnstone's Trade Render Systems and Finishes Guide. The guide contains additional information about our systems and products to help you make the right choices for your project.



APPLICATION

Johnstone's Trade External Wall Insulation and Render Systems have been carefully developed to offer the highest levels of performance and lifespan when applied to our specification. Please use our Application Guide for step by step instructions on the best way to apply render products.



TECHNICAL SUPPORT

The Johnstone's Trade team of technical experts is on hand to assist you in applying our products, providing written project specifications and in helping you with difficult or challenging details. We'll visit your site and can provide most technical services you may require to ensure any project is completed to the highest possible standards.

For more information or to get a copy of the guides please call or email and we'll be happy to help you to get the most from our products.



COMPLEMENTARY MASONRY PAINT PRODUCTS

In addition to the above finishing renders Johnstone's Trade offers a full range of high performance masonry paints, including smooth masonry paint, textured paints and pigmented based exterior coatings for a variety of substrates including previously rendered surfaces, rough cast brick, block and concrete.

We also offer Self Cleaning Masonry paint which has been specifically developed to help exteriors look cleaner for longer and resist the dulling effects of pollution and weathering. Silicone Masonry paint is also available and is designed to provide the highest level of breathability whilst repelling surface water to ensure long lasting protection for exterior surfaces.



RENDER COLOUR CARD Guide to Finishes

Johnstone's Trade Stormshield Silicone Enhanced Render 1.0mm/1.5mm



A high performance render formulated from acrylic resins and silicone additives to offer the perfect balance of value and durability.

LONG TERM PROTECTION	WATER REPELLENT	SIZE	SIZE	<i>Note: This product requires Johnstone's Trade Stormshield Silicone Enhanced Primer to be applied to the substrate before application.</i>

*Available in a variety of colours. Matches may be available on request.

Coverage	1.0mm: 2.0kg/m ² (12.5m ² per pack) 1.5mm: 2.5kg/m ² (10m ² per pack)
Pack Size	25kg
Colours	White & Tinted Colours*
Application	Steel trowel or suitable spray
Expected Life	Over 30 Years #

#This product has been tested by the BBA and has a life expectancy of over 30 years when applied as part of a Johnstone's Trade Stormshield system.

Johnstone's Trade Stormshield Full Silicone Render 1.0mm/1.5mm*



A high performance render formulated from silicone resins to offer the highest levels of all weather and water protection.

LONG TERM PROTECTION	WATER REPELLENT	SIZE	SIZE	<i>Note: This product requires Johnstone's Trade Stormshield Full Silicone Primer to be applied to the substrate before application.</i>

*Available in a variety of colours. Matches may be available on request.

*By special order only.

Coverage	1.0mm: 2.0kg/m ² (12.5m ² per pack) 1.5mm: 2.0kg/m ² (10m ² per pack)
Pack Size	25kg
Colours	White & Tinted Colours*
Application	Steel trowel or suitable spray
Expected Life	Over 30 Years #

#This product has been tested by the BBA and has a life expectancy of over 30 years when applied as part of a Johnstone's Trade Stormshield system.

Johnstone's Trade Stormshield Mineral Thin Coat Render 1.5mm*



A high performance, fast set, cement based and polymer modified through coloured mineral thin coat render that can be applied at 0°C.

LONG TERM PROTECTION	WATER REPELLENT	SIZE	<i>Note: Only to be applied over Johnstone's Trade Stormshield High Performance Basecoat reinforced with mesh cloth.</i>

*Available in the 5 standard colours featured in this colour guide. Additional colours and colour matches may be available on request.

*By special order only.

Coverage	2.08kg/m ² (12m ² per pack)
Pack Size	25kg
Colours	5 standard colours*
Application	Steel trowel or suitable spray

Johnstone's Trade Stormshield Silicone Mineral Thin Coat Render 1.5mm



A high performance, fast set, cement based and polymer modified through coloured silicone mineral thin coat render that can be applied at 0°C.

LONG TERM PROTECTION	WATER REPELLENT	SIZE	<i>Note: Only to be applied over Johnstone's Trade Stormshield High Performance Basecoat reinforced with mesh cloth.</i>

*Available in the 5 standard colours featured in this colour guide. Additional colours and colour matches may be available on request.

Coverage	2.5kg/m ² (10m ² per pack)
Pack Size	25kg
Colours	5 standard colours*
Application	Steel trowel or suitable spray

Johnstone's Trade Stormshield Dash Receiver Render



A high performance cement based render enhanced with polymers and reinforced with glass fibres to create the perfect surface for dry / pebble dashing.

LONG TERM PROTECTION	WATER REPELLENT	FINISH WITH AGGREGATE	<i>Note: This product is supplied in powder form and requires mixing by the applicator. This product has been specially formulated to be used in conjunction with Johnstone's approved dashing aggregates.</i>

*Available in the 14 standard colours featured in this colour guide. Additional colours and colour matches may be available on request.

Coverage	10kg/m ² (2.5m ² per pack)
Pack Size	25kg
Colours	14 standard colours*
Application	Steel trowel or suitable spray
Expected Life	Over 30 Years #

#This product has been tested by the BBA and has a life expectancy of over 30 years when applied as part of a Johnstone's Trade Stormshield system.

Johnstone's Trade Stormshield Brick Effect Render



A high performance cement based render enhanced with polymers and formulated to be applied in two coloured coats and cut to create a brick effect.

LONG TERM PROTECTION	WATER REPELLENT	2 COAT APPLICATION	<i>Note: This product is supplied in powder form and requires mixing by the applicator. Application of this product may require specialist tools. If in doubt please seek advice.</i>

*Available in the 12 standard colours featured in this colour guide. Additional colours and colour matches may be available on request.

Coverage	12kg/m ² (in total for 2 colours)
Pack Size	25kg
Colours	12 standard colours*
Application	Steel trowel or suitable spray
Expected Life	Over 30 Years #

#This product has been tested by the BBA and has a life expectancy of over 30 years when applied as part of a Johnstone's Trade Stormshield system.

Johnstone's Trade Stormshield Brick Slip Pointing Mortar



A high performance vapour permeable, polymer modified pointing mortar that has been specially formulated for use with brick and stone slips to offer excellent weather protection and durability.

LONG TERM PROTECTION	WATER REPELLENT	APPLY BY TROWEL GUN	<i>Note: This product is supplied in powder form and requires mixing by the applicator. Application of this product may require specialist tools. If in doubt please seek advice.</i>

*Available in the 7 standard colours featured in this colour guide. Additional colours and colour matches may be available on request.

Coverage	4kg/m ² (6.25m ² per pack)
Pack Size	25kg
Colours	7 standard colours*
Application	Pointing trowel or mortar gun

Johnstone's Trade Stormshield Scratch Render



A high performance polymer modified through colour cement render formulated to offer a low maintenance, long lasting, tough and weather resistant finish.

LONG TERM PROTECTION	WATER REPELLENT	APPLY BY SPAT/TROWEL	<i>Note: This product is supplied in powder form and requires mixing by the applicator. Application of this product may require specialist tools. If in doubt please seek advice.</i>

*Available in the 14 standard colours featured in this colour guide. Additional colours and colour matches may be available on request.

Coverage	25kg/m ² (1m ² per pack)
Pack Size	25kg
Colours	14 standard colours*
Application	Steel trowel or suitable spray
Expected Life	Over 30 Years #

#This product has been tested by the BBA and has a life expectancy of over 30 years when applied as part of a Johnstone's Trade Stormshield system.

Johnstone's Trade Stormshield Acrylic Render 1.5mm



A water resistant and durable finishing coat that is easy to apply.

LONG TERM PROTECTION	WATER REPELLENT	SIZE	<i>Note: This product requires Johnstone's Trade Stormshield Silicone Enhanced Primer to be applied to the substrate before application.</i>

*Available in a variety of colours. Please note colour offer may be different to what is on this colour card.

Coverage	1.5mm: 2.5g/m ² (10m ² per pack)
Pack Size	25kg
Colours	White and Tinted Colours
Application	Steel trowel or suitable spray

ANY QUERIES PLEASE CONTACT US

01924 354354

ewisupport@ppg.com

www.johnstonestrade.com

